

## Evaluating the **ADP2370/ADP2371** Buck Regulators

### FEATURES

**Buck regulator input voltage range:** 3.2 V to 15 V

**Buck regulator output current:** 800 mA

**Operating temperature range:** -40°C to +125°C

### EQUIPMENT NEEDED

**Voltage meters, current meters, power supply**

**Resistive or electronic loads**

### DOCUMENTS NEEDED

**ADP2370/ADP2371** data sheet

**UG-220** user guide

### GENERAL DESCRIPTION

The **ADP2370/ADP2371** evaluation boards (ADP2370CP-EVALZ and ADP2371CP-EVALZ) are used to demonstrate the functionality of the **ADP2370/ADP2371** buck regulators.

Basic electrical performance measurements, such as line and load regulation, efficiency, and ground current, can be demonstrated with a few voltage supplies, voltage meters, current meters, and load resistors.

Complete information about the **ADP2370/ADP2371** buck regulators is available in the **ADP2370/ADP2371** data sheet, which should be consulted in conjunction with this user guide when using the evaluation board.

### DIGITAL PICTURE OF THE EVALUATION BOARD

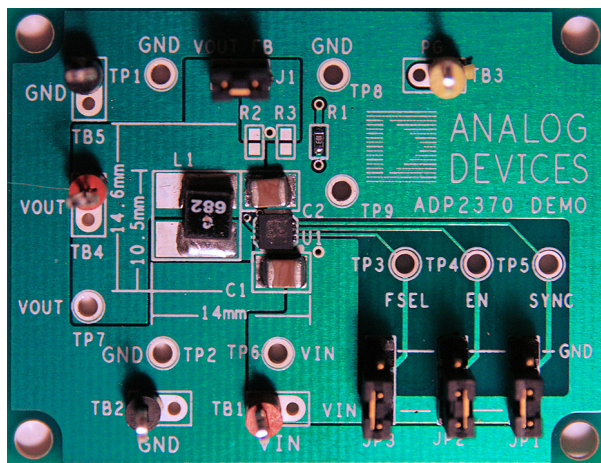


Figure 1.

TABLE OF CONTENTS

Features .....	1	Line Regulation Measurements.....	5
Equipment Needed.....	1	Load Regulation Measurements.....	5
Documents Needed.....	1	Efficiency Measurements .....	6
General Description .....	1	Calculating the Efficiency .....	7
Digital Picture of the Evaluation Board.....	1	Quiescent Current Measurements .....	8
Revision History .....	2	Quiescent Current Consumption .....	9
Evaluation Board Hardware and Schematic .....	3	Ordering Information.....	10
Evaluation Board Configuration .....	3	Bill of Materials.....	10
Output Voltage Accuracy Measurements.....	4	Related Links.....	10

REVISION HISTORY

4/12—Revision 0: Initial Version

## EVALUATION BOARD HARDWARE AND SCHEMATIC

### EVALUATION BOARD CONFIGURATION

The [ADP2370/ADP2371](#) evaluation boards ship with all the components necessary to perform basic electrical performance measurements, including the input and output capacitors, buck inductor, and power-good pull-up resistor. The placement of the critical components for the buck regulator (inductor and capacitors) has been optimized for low noise and the smallest possible footprint.

Figure 2 shows the schematic of the evaluation board configuration. Table 1 describes the hardware components.

For complete information about the [ADP2370/ADP2371](#) buck regulators, see the [ADP2370/ADP2371](#) data sheet.

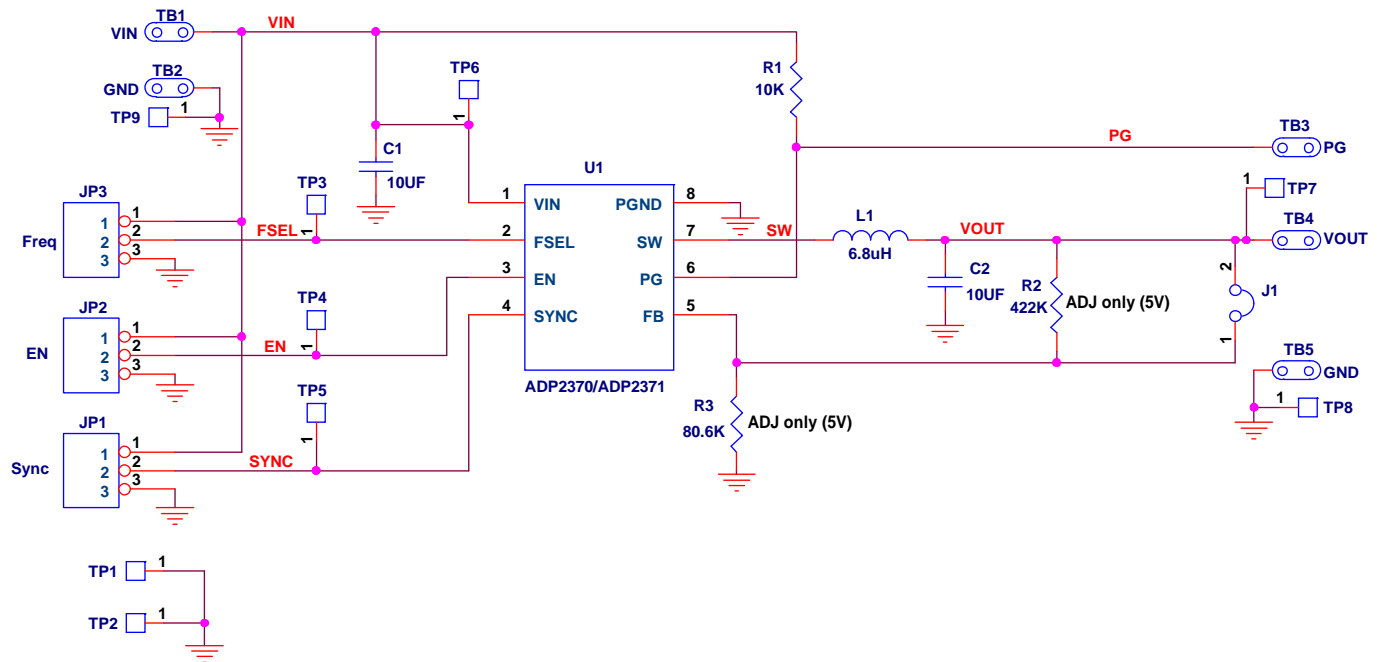


Figure 2. Evaluation Board Schematic

Table 1. Evaluation Board Hardware Components

Component	Function	Description
U1 <sup>1</sup>	Buck regulator	<a href="#">ADP2370</a> or <a href="#">ADP2371</a> buck regulator.
C1	Input capacitor	10 µF input bypass capacitor required for transient performance.
C2	Output capacitor	10 µF output capacitor required for stability and transient performance.
L1 <sup>2</sup>	Inductor	6.8 µH inductor for 3.3 V output at 1.2 MHz.
R1	Pull-up resistor	10 kΩ pull-up resistor for power good (PG).
R2	Resistor	422 kΩ, 1% resistor. With R3, sets the output voltage to 5 V (adjustable version only).
R3	Resistor	80.6 kΩ, 1% resistor. With R2, sets the output voltage to 5 V (adjustable version only).
JP1	Jumper	When JP1 is connected to VIN, forced PWM mode is enabled. When JP1 is connected to GND, auto mode is enabled. When JP1 is connected to SYNC, an external clock can be used to set the operating frequency.
JP2	Jumper	When JP2 is connected to VIN, the output is enabled. When JP2 is connected to GND, the output is disabled.
JP3	Jumper	When JP3 is connected to VIN, 1.2 MHz operation is selected. When JP3 is connected to GND, 600 kHz operation is selected.
J1	Jumper	Connects the FB pin to the buck regulator output (fixed output version only).

<sup>1</sup> Component varies depending on the evaluation board model ordered.

<sup>2</sup> Inductor value varies depending on the output voltage.

## OUTPUT VOLTAGE ACCURACY MEASUREMENTS

Figure 3 shows how to connect the evaluation board to a voltage source and a voltage meter (voltmeter) for basic output voltage accuracy measurements. A resistor can be used as the load for the buck regulator. Ensure that the resistor has a power rating adequate to handle the power that is expected to be dissipated across it. An electronic load can be used as an alternative. In addition, ensure that the voltage source can supply enough current for the expected load levels.

Follow these steps to connect the evaluation board to a voltage source and voltage meter:

1. Connect the negative terminal (–) of the voltage source to the GND pad (TB2) on the evaluation board.
2. Connect the positive terminal (+) of the voltage source to the VIN pad (TB1) on the evaluation board.
3. Connect a load between the VOUT pad (TB4) and one of the GND pads on the evaluation board.

4. Connect the negative terminal (–) of the voltmeter to one of the GND pads on the evaluation board.
5. Connect the positive terminal (+) of the voltmeter to the VOUT pad (TP7) on the evaluation board.
6. Connect a jumper between Pin 1 and Pin 2 of JP2 to enable the buck regulator.
7. Connect a jumper between Pin 3 and Pin 2 of JP1 to enable auto mode.
8. Connect a jumper between Pin 1 and Pin 2 of JP3 to enable 1.2 MHz operation.
9. Turn on the voltage source.

If the load current is large, connect the voltage meter as close to TB4 as possible to reduce the effects of IR drops.

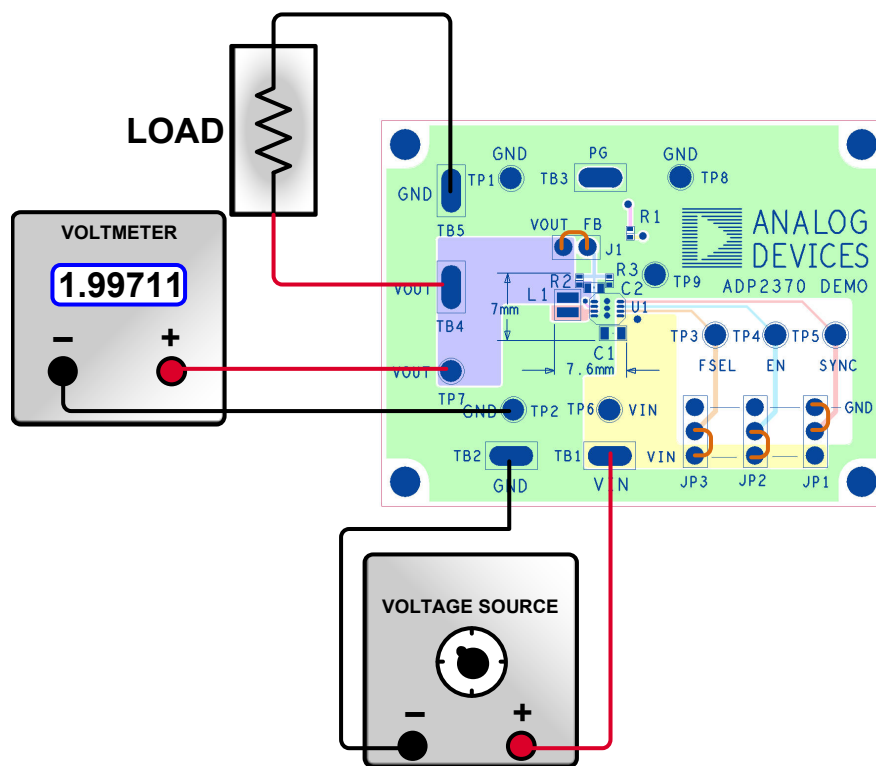


Figure 3. Buck Regulator Output Voltage Regulation Measurement Setup

09532-004

## LINE REGULATION MEASUREMENTS

For line regulation measurements, the output of the buck regulator is monitored while the input is varied. For good line regulation, the output must change as little as possible with varying input levels.

For example, for an ADP2370/ADP2371 with a fixed 3.3 V output,  $V_{IN}$  must be varied from 3.8 V to 15 V. This measurement can be repeated under different load conditions. Figure 4 shows the typical line regulation performance of an ADP2370/ADP2371 with a fixed 3.3 V output.

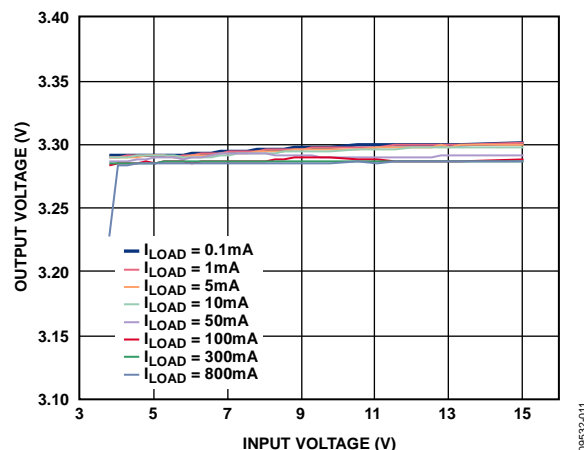


Figure 4. Output Voltage ( $V_{OUT}$ ) vs. Input Voltage ( $V_{IN}$ )

## LOAD REGULATION MEASUREMENTS

For load regulation measurements, the output of the buck regulator is monitored while the load is varied. For good load regulation, the output must change as little as possible with varying loads.

The input voltage must be held constant during this measurement. The load current can be varied from 0 mA to 800 mA. Figure 5 shows the typical load regulation performance of an ADP2370/ADP2371 with a fixed 3.3 V output for various input voltages.

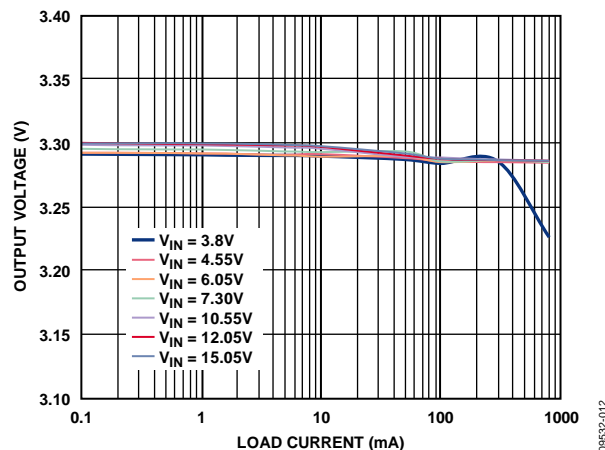


Figure 5. Output Voltage ( $V_{OUT}$ ) vs. Load Current ( $I_{OUT}$ )

## EFFICIENCY MEASUREMENTS

Figure 6 shows how to connect the evaluation board to a voltage source, two voltage meters, and two current meters (ammeters) for basic efficiency measurements. A resistor can be used as the load for the buck regulator. Ensure that the resistor has a power rating adequate to handle the power that is expected to be dissipated across it. An electronic load can be used as an alternative. In addition, ensure that the voltage source can supply enough current for the expected load levels.

Follow these steps to connect the evaluation board to a voltage source and to the voltage and current meters:

1. Connect a jumper between Pin 1 and Pin 2 of JP2 to enable the buck regulator.
2. Connect a jumper between Pin 3 and Pin 2 of JP1 to enable auto mode.
3. Connect a jumper between Pin 1 and Pin 2 of JP3 to enable 1.2 MHz operation.
4. Connect the negative terminal (–) of the voltage source to the GND pad (TB2) on the evaluation board.
5. Connect the positive terminal (+) of the voltage source to the positive terminal (+) of the input ammeter.
6. Connect the negative terminal (–) of the input ammeter to the VIN pad (TB1) on the evaluation board.
7. Connect the positive terminal (+) of the input voltmeter to the VIN pad (TB1) on the evaluation board.
8. Connect the negative terminal (–) of the input voltmeter to the GND pad (TB2) on the evaluation board.
9. Connect the positive terminal (+) of the output ammeter to the VOUT pad (TB4) on the evaluation board.
10. Connect a load between the negative terminal (–) of the output ammeter and the GND pad (TB5) on the evaluation board.
11. Connect the positive terminal (+) of the output voltmeter to the VOUT pad (TB4) on the evaluation board.
12. Connect the negative terminal (–) of the output voltmeter to the GND pad (TP8) on the evaluation board.
13. Turn on the voltage source.

If the load current is large, connect the voltage meters as close as possible to the VIN and VOUT pads to reduce the effects of IR drops.

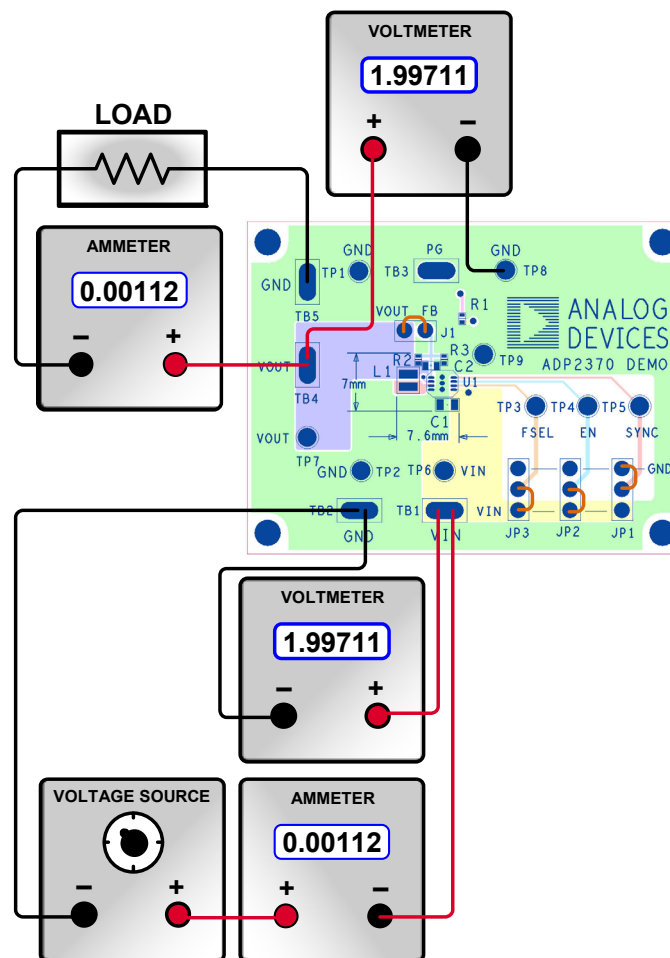


Figure 6. Buck Regulator Efficiency Measurement Setup

09552-006

## CALCULATING THE EFFICIENCY

The efficiency is calculated as follows:

$$\text{Efficiency} = 100\% \times (V_{OUT} \times I_{OUT}) / (V_{IN} \times I_{IN})$$

The efficiency of the buck regulator can be measured over several combinations of input voltage and load current. Figure 7 shows the efficiency of a 3.3 V output buck regulator over input voltage and load current.

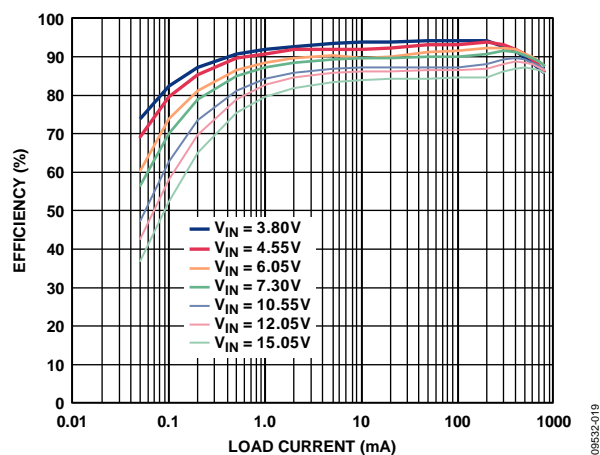


Figure 7. Efficiency vs. Input Voltage and Load Current

## QUIESCENT CURRENT MEASUREMENTS

Figure 8 shows how to connect the evaluation board to two voltage sources and a current meter for quiescent current measurements.

Follow these steps to connect the evaluation board to the voltage sources and to the current meter:

1. Connect a jumper between Pin 1 and Pin 2 of JP2 to enable the buck regulator.
2. Connect a jumper between Pin 3 and Pin 2 of JP1 to enable auto mode.
3. Connect a jumper between Pin 1 and Pin 2 of JP3 to enable 1.2 MHz operation.
4. Connect the positive terminal (+) of the input voltage source to the positive terminal (+) of the ammeter.
5. Connect the negative terminal (–) of the ammeter to the VIN pad (TB1) on the evaluation board.
6. Connect the negative terminal (–) of the input voltage source to the GND pad (TB2) on the evaluation board.
7. Remove R1. (R1 can remain in circuit, but it increases the quiescent current by  $10\text{ k}\Omega/V_{\text{IN}}$ .)
8. Connect the positive terminal (+) of the output voltage source to the VOUT pad (TB4) on the evaluation board.
9. Connect the negative terminal (–) of the output voltage source to the GND pad (TB5) on the evaluation board.
10. If the output voltage source has a current limit function, set the current limit to 10 mA or less.
11. Set the output voltage source output voltage to ~500 mV above the normal output voltage of the [ADP2370/ADP2371](#) evaluation board.
12. Turn on the voltage source.

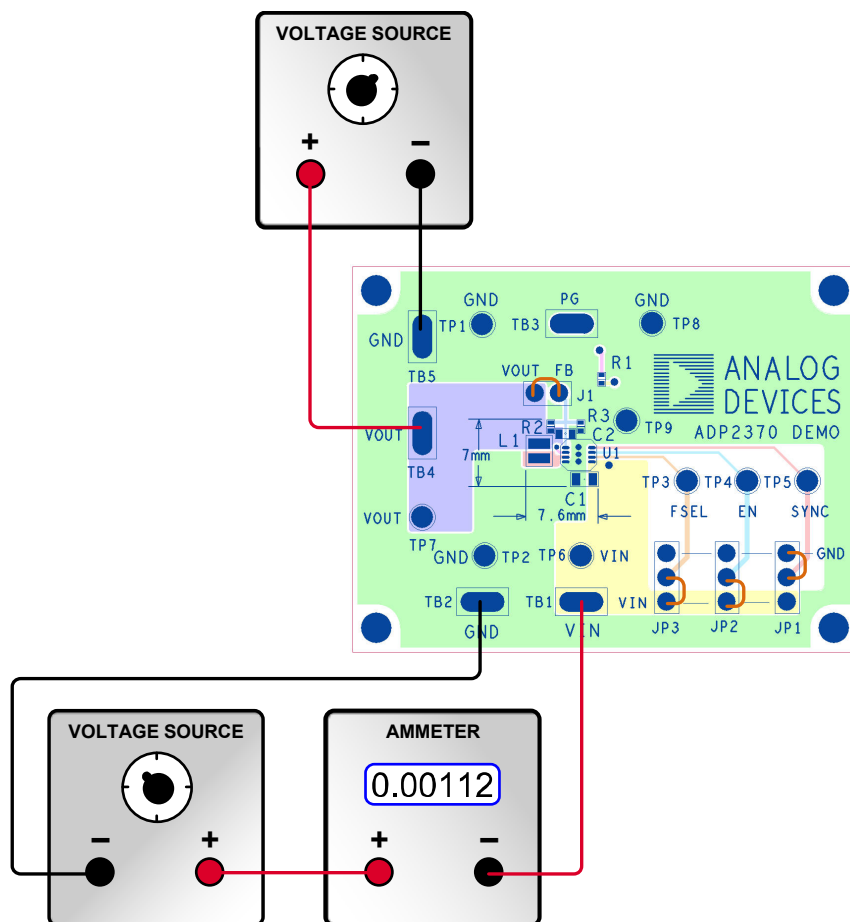


Figure 8. Quiescent Current Measurement Setup

06532-008



## QUIESCENT CURRENT CONSUMPTION

Quiescent current measurements can determine how much current the internal circuits of the buck regulator consume under no load conditions. To be efficient, the regulator must consume as little current as possible. Figure 9 shows the typical quiescent current consumption at no load for various input voltages. When the device is disabled (EN = PGND), quiescent current drops to less than 2  $\mu\text{A}$ .

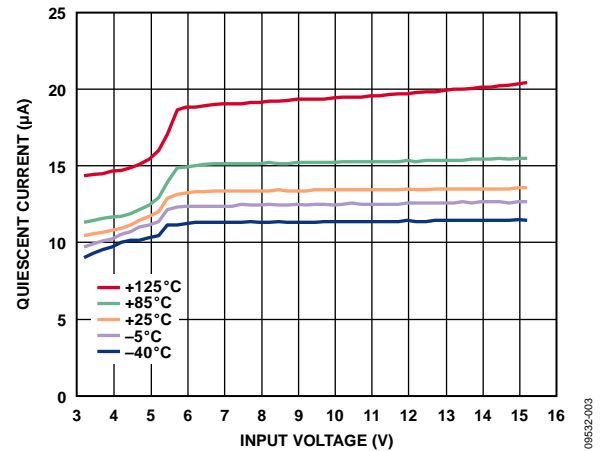


Figure 9. Quiescent Current vs. Input Voltage, No Load

## ORDERING INFORMATION

### BILL OF MATERIALS

Table 2.

Qty	Reference Designator	Description	Manufacturer/Vendor	Vendor Part No.
2	C1, C2	Capacitor, MLCC, 10 $\mu$ F, 25 V, 1210, X5R	Murata or equivalent	
3	JP1, JP2, JP3	Header, single, STR, three pins	Digi-Key Corp.	S1012E-03-ND
1	J1	Header, single, STR, two pins	Digi-Key Corp.	S1012E-02-ND
1	L1	Inductor, 6.8 $\mu$ H, 4 mm $\times$ 4 mm $\times$ 3 mm	Coilcraft	XAL4030-682ME
1	R1	Resistor, 10 k $\Omega$ , 0.10 W, 0603	Vishay or equivalent	
1	U1	IC, <a href="#">ADP2370/ADP2371</a> buck regulator	Analog Devices, Inc.	ADP2370ACPZ-3.3-R7 ADP2371ACPZ-3.3-R7

### RELATED LINKS

Resource	Description
<a href="#">ADP2370/ADP2371</a>	Product Page
<a href="#">UG-220</a>	<a href="#">ADP2370/ADP2371</a> RedyKit™ User Guide

## NOTES

## NOTES

**ESD Caution**

**ESD (electrostatic discharge) sensitive device.** Charged devices and circuit boards can discharge without detection. Although this product features patented or proprietary protection circuitry, damage may occur on devices subjected to high energy ESD. Therefore, proper ESD precautions should be taken to avoid performance degradation or loss of functionality.

**Legal Terms and Conditions**

By using the evaluation board discussed herein (together with any tools, components documentation or support materials, the "Evaluation Board"), you are agreeing to be bound by the terms and conditions set forth below ("Agreement") unless you have purchased the Evaluation Board, in which case the Analog Devices Standard Terms and Conditions of Sale shall govern. Do not use the Evaluation Board until you have read and agreed to the Agreement. Your use of the Evaluation Board shall signify your acceptance of the Agreement. This Agreement is made by and between you ("Customer") and Analog Devices, Inc. ("ADI"), with its principal place of business at One Technology Way, Norwood, MA 02062, USA. Subject to the terms and conditions of the Agreement, ADI hereby grants to Customer a free, limited, personal, temporary, non-exclusive, non-sublicensable, non-transferable license to use the Evaluation Board FOR EVALUATION PURPOSES ONLY. Customer understands and agrees that the Evaluation Board is provided for the sole and exclusive purpose referenced above, and agrees not to use the Evaluation Board for any other purpose. Furthermore, the license granted is expressly made subject to the following additional limitations: Customer shall not (i) rent, lease, display, sell, transfer, assign, sublicense, or distribute the Evaluation Board; and (ii) permit any Third Party to access the Evaluation Board. As used herein, the term "Third Party" includes any entity other than ADI, Customer, their employees, affiliates and in-house consultants. The Evaluation Board is NOT sold to Customer; all rights not expressly granted herein, including ownership of the Evaluation Board, are reserved by ADI. **CONFIDENTIALITY.** This Agreement and the Evaluation Board shall all be considered the confidential and proprietary information of ADI. Customer may not disclose or transfer any portion of the Evaluation Board to any other party for any reason. Upon discontinuation of use of the Evaluation Board or termination of this Agreement, Customer agrees to promptly return the Evaluation Board to ADI. **ADDITIONAL RESTRICTIONS.** Customer may not disassemble, decompile or reverse engineer chips on the Evaluation Board. Customer shall inform ADI of any occurred damages or any modifications or alterations it makes to the Evaluation Board, including but not limited to soldering or any other activity that affects the material content of the Evaluation Board. Modifications to the Evaluation Board must comply with applicable law, including but not limited to the RoHS Directive. **TERMINATION.** ADI may terminate this Agreement at any time upon giving written notice to Customer. Customer agrees to return to ADI the Evaluation Board at that time. **LIMITATION OF LIABILITY.** THE EVALUATION BOARD PROVIDED HEREUNDER IS PROVIDED "AS IS" AND ADI MAKES NO WARRANTIES OR REPRESENTATIONS OF ANY KIND WITH RESPECT TO IT. ADI SPECIFICALLY DISCLAIMS ANY REPRESENTATIONS, ENDORSEMENTS, GUARANTEES, OR WARRANTIES, EXPRESS OR IMPLIED, RELATED TO THE EVALUATION BOARD INCLUDING, BUT NOT LIMITED TO, THE IMPLIED WARRANTY OF MERCHANTABILITY, TITLE, FITNESS FOR A PARTICULAR PURPOSE OR NONINFRINGEMENT OF INTELLECTUAL PROPERTY RIGHTS. IN NO EVENT WILL ADI AND ITS LICENSORS BE LIABLE FOR ANY INCIDENTAL, SPECIAL, INDIRECT, OR CONSEQUENTIAL DAMAGES RESULTING FROM CUSTOMER'S POSSESSION OR USE OF THE EVALUATION BOARD, INCLUDING BUT NOT LIMITED TO LOST PROFITS, DELAY COSTS, LABOR COSTS OR LOSS OF GOODWILL. ADI'S TOTAL LIABILITY FROM ANY AND ALL CAUSES SHALL BE LIMITED TO THE AMOUNT OF ONE HUNDRED US DOLLARS (\$100.00). **EXPORT.** Customer agrees that it will not directly or indirectly export the Evaluation Board to another country, and that it will comply with all applicable United States federal laws and regulations relating to exports. **GOVERNING LAW.** This Agreement shall be governed by and construed in accordance with the substantive laws of the Commonwealth of Massachusetts (excluding conflict of law rules). Any legal action regarding this Agreement will be heard in the state or federal courts having jurisdiction in Suffolk County, Massachusetts, and Customer hereby submits to the personal jurisdiction and venue of such courts. The United Nations Convention on Contracts for the International Sale of Goods shall not apply to this Agreement and is expressly disclaimed.