

NCV7535EVB

NCV7535 SPI Controlled H-Bridge Pre-Driver Evaluation Board User's Manual

Introduction

This document describes the NCV7535 EVB board for the ON Semiconductor NCV7535 SPI controlled H-bridge and Dual-Half Bridge pre-driver. The functionality and major parameters can be evaluated with the NCV7535 EVB board.

The NCV7535 is a monolithic SPI controlled chip with enhanced feature set useful in automotive systems. Besides the SPI bus interface, the IC features an H-bridge pre-driver to control a DC-motor. This allows a highly integrated solution.

Evaluation Board Features

- N-MOSFET Reverse Protection and Decoupling on the Main (Battery) Supply
- On-board +5 V LDO
- MCU with USB Interface Controlling NCV7535
- One-row Pin Header, providing the Circuit Signals, enables Easy Insertion of the Evaluation Board into a more Complex Application Setup
- On-board Current Sensing Shunt Resistor and Operational Amplifier
- Good Thermal Connection of the Power MOSFETs allowing High Current Capability
- Oscilloscope Test-points on all Important Signals
- M4 Screw Connectors for Power Signals (Battery, Ground, Output)



ON Semiconductor®

www.onsemi.com

EVAL BOARD USER'S MANUAL

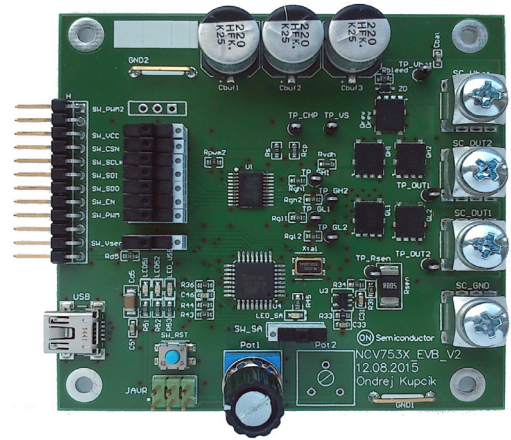


Figure 1. Evaluation Board Photo

NCV7535EVB

SCHEMATIC

The evaluation board consists of two main blocks:
NCV7535 application and control MCU including USB
interface (see Figure 2).

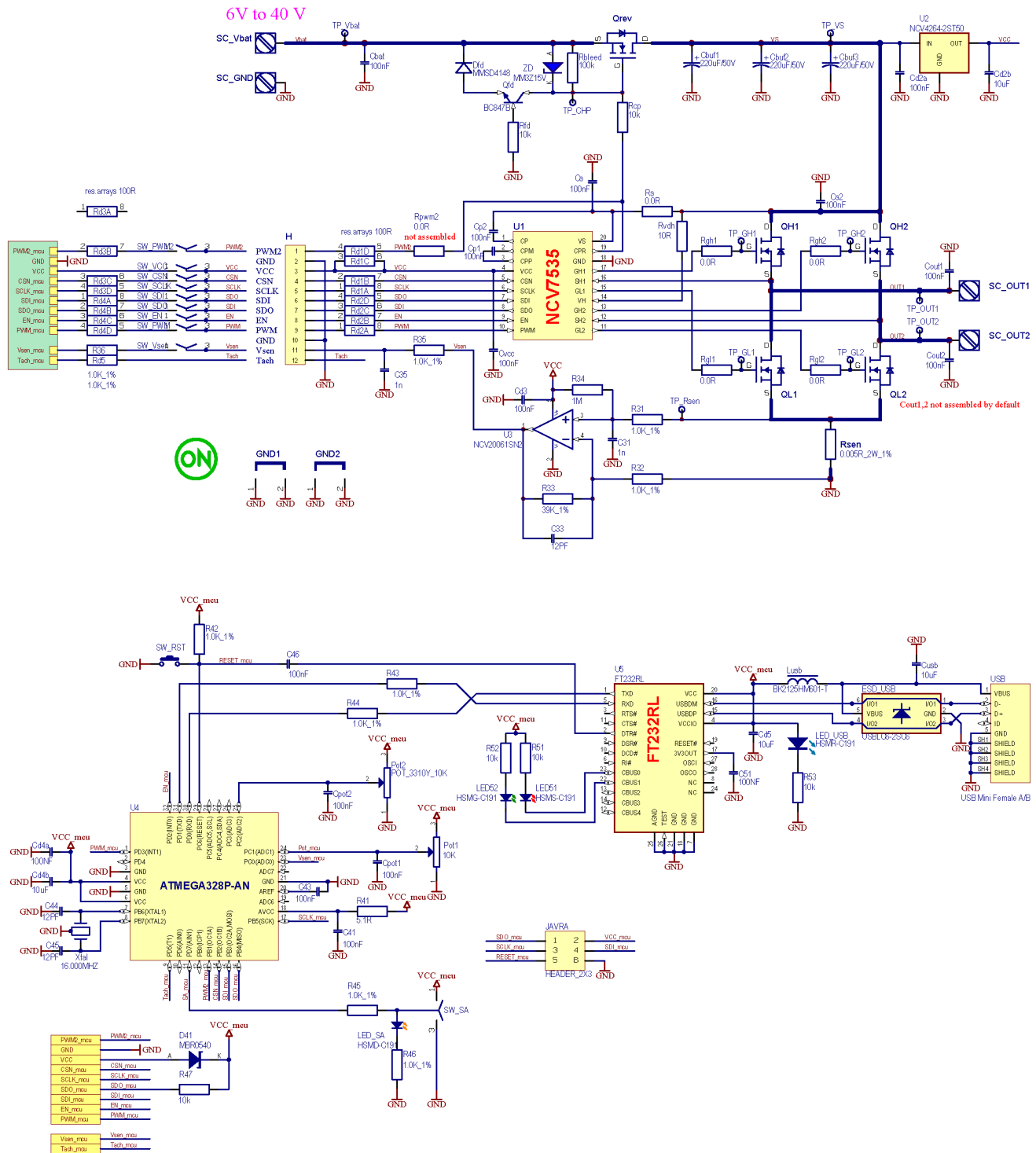


Figure 2. NCV7535 Evaluation Board Schematic

NCV7535EVB

Table 1. ABSOLUTE MAXIMUM RATINGS

Rating	External Pin	Min	Max	Unit
Power Supply voltage	Vbat	-40	40	V
Digital Supply voltage	VCC	-0.3	5.5	V
Digital inputs/outputs voltage	CSB, SCLK, SDI, SDO, EN, PWM	-0.3	VCC + 0.3	V
Current sense output voltage	Vsen	-0.3	VCC + 0.3	
Current sense output current	Vsen	Internally limited		A
H-bridge outputs DC voltage	OUT1,2	-0.3	Vbat + 0.3	V
H-bridge outputs DC current	OUT1,2	-20	20	A
NCV7535 junction temperature		-40	150	°C
Qrev, QH1/2, QL1/2 junction temperature		-55	175	°C
Board temperature		-40	125	°C

Stresses exceeding those listed in the Maximum Ratings table may damage the device. If any of these limits are exceeded, device functionality should not be assumed, damage may occur and reliability may be affected.

Table 2. RECOMMENDED BOARD OPERATING CONDITIONS

Rating	External Pin	Min	Max	Unit
Supply voltage	Vbat	6	28	V
Digital Supply voltage	VCC	5 V ± 5% (on-board supply)		V
Digital inputs/outputs voltage	CSB, SCLK, SDI, SDO, EN, PWM	0	VCC	V
Current sense output voltage	Vsen	Generated internally		
Current sense output current	Vsen	Internally limited		A
H-bridge outputs voltage	OUT1,2	0	Vbat	V
H-bridge outputs current	OUT1,2	Limited by max. junction/board temperature		A
NCV7535 junction temperature		-40	150	°C
Qrev, QH1/2, QL1/2 junction temperature		-55	175	°C
Board temperature		-40	125	°C

Functional operation above the stresses listed in the Recommended Operating Ranges is not implied. Extended exposure to stresses beyond the Recommended Operating Ranges limits may affect device reliability.

OPERATIONAL GUIDELINES

NCV7535 is a monolithic SPI controlled H-bridge pre-driver for a DC-motor with enhanced feature set useful in automotive systems.

The evaluation board contains all the components necessary for NCV7535 application: a control MCU, USB interface, +5 V LDO supply for VCC and current sensing operational amplifier.

An external MCU can be connected through H connector to controls all functions and settings of NCV7535.

Board Configuration

The NCV7535 evaluation board allows two modes of operation:

- Standalone / full-demonstration using on-board MCU
 - ♦ All the slide switches (incl. SW_SA) have to be set to the position as shown in Figure 3.
 - ♦ MCU is controlled via mini USB connector “USB”
 - ♦ NCV7535 digital signals are still accessible via “H” connector
- NCV7535 evaluation only; external control
 - ♦ All the switches (incl. SW_SA) have to be set to the position as shown in Figure 3.
 - ♦ External SPC control has to be connected via “H” USB connector

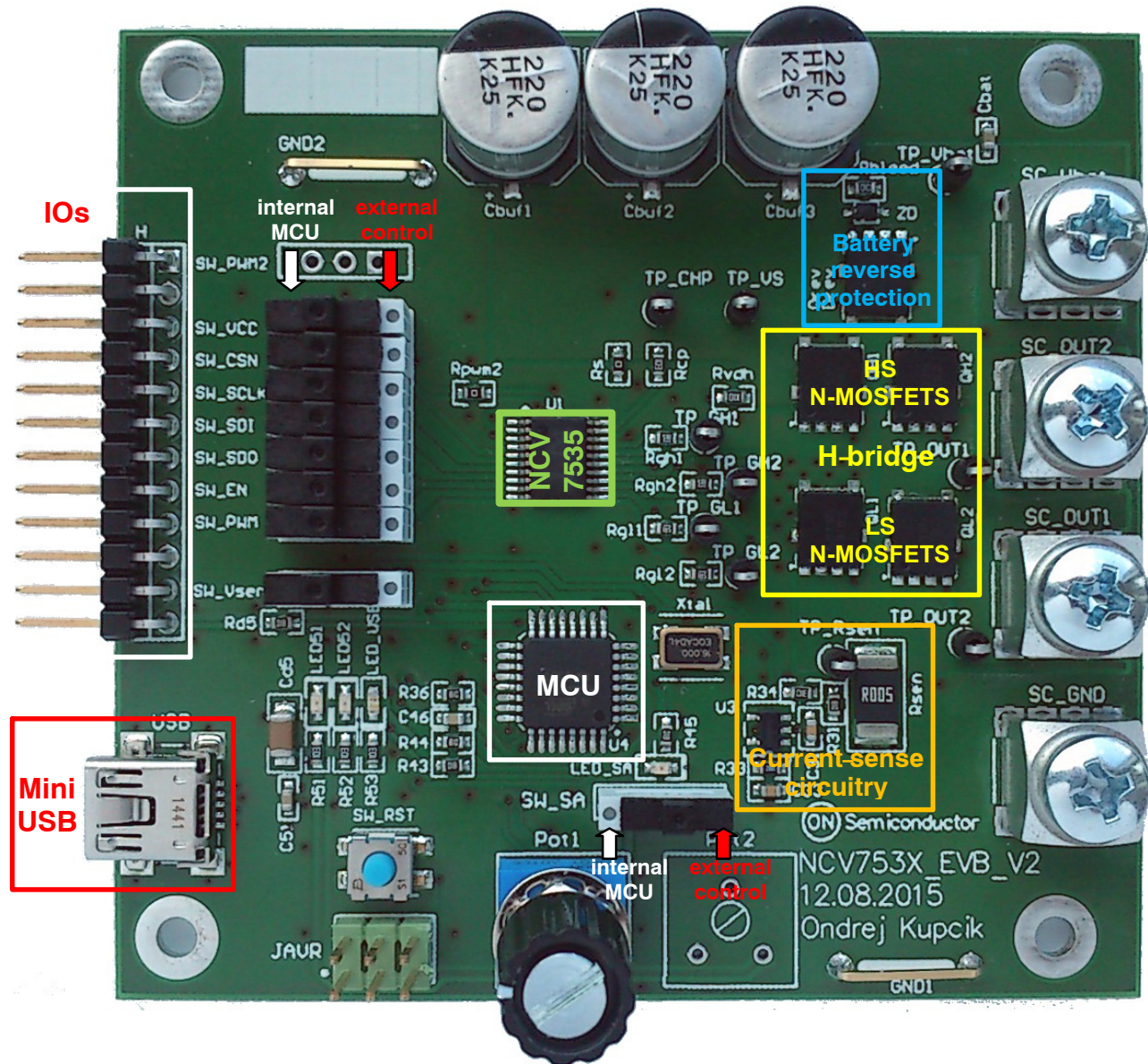


Figure 3. NCV7535 Evaluation Board Picture, Top Side

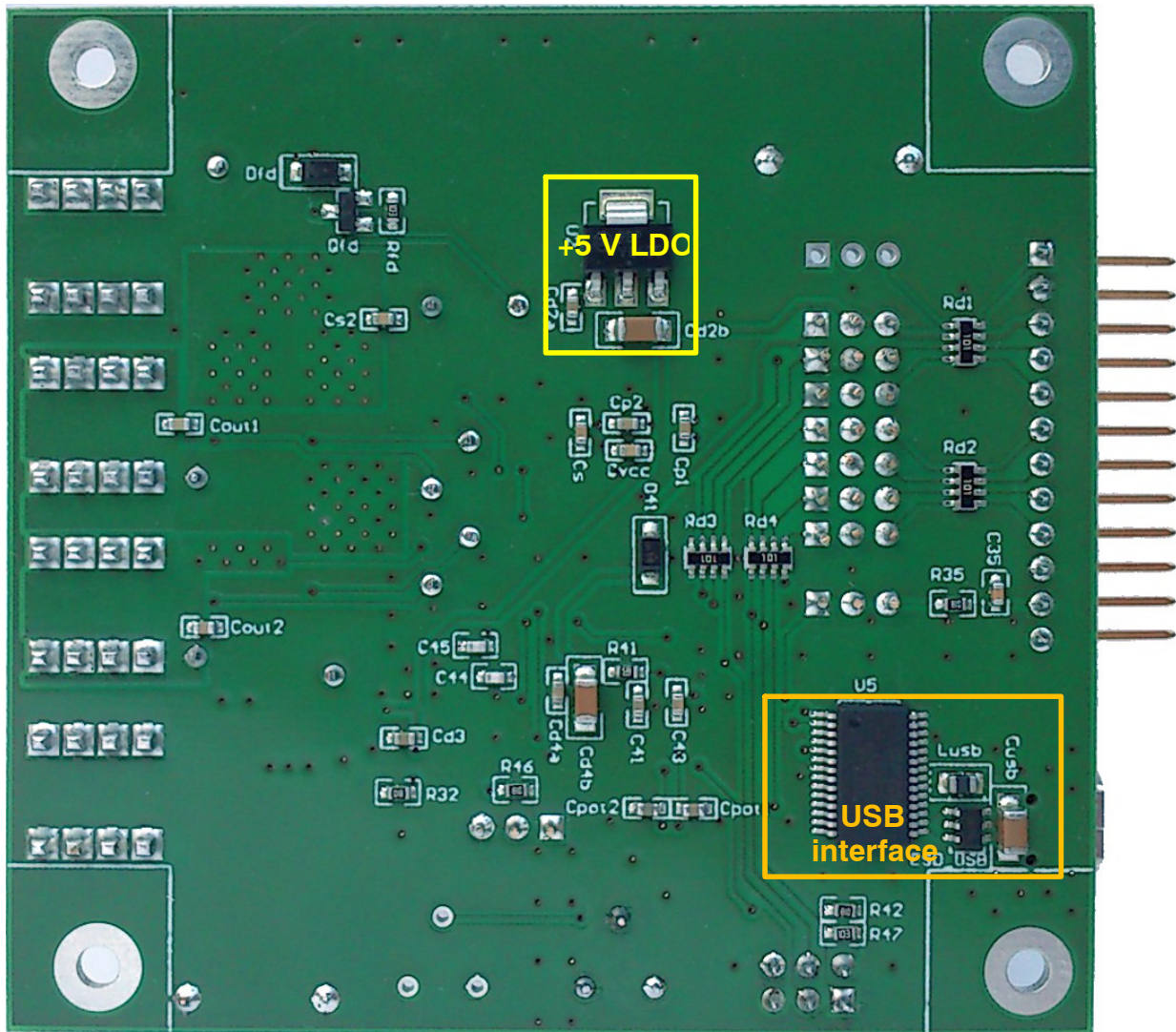


Figure 4. NCV7535 Evaluation Board Picture, Bottom Side

FUNCTIONAL DESCRIPTION

Power Supply

The output stage of NCV7535 pre-driver is supplied via VS pin. Normally, this pin is directly connected to the H-bridge supply. N-MOSFET Qrev ensures battery-reverse protection.

By default, H-bridge power supply is buffered by three 220 µF capacitors covering high current peaks caused by the inrush current or PWM operation.

The VS pin of NCV7535 can be filtered using a non-zero value of Rs resistor.

Current Sensing Amplifier

NCV7535 evaluation board contains low-side sense resistors and operational amplifier for H-bridge current sensing.

The power MOSFETs as well as sensing resistor Rsen value are selected according to maximum application DC current. Higher current is possible for limited time as long as the junction temperatures are not exceeded.

The current-sensing amplifier has a fixed gain of 40 and the output is referenced to GND. The maximum offset of used operational amplifier (NCV20061) is ±4 mV, which is equivalent to the load current of 0.8 A (with Rsen = 5 mΩ). To sense low currents (< 1 A), a positive offset can be introduced via R34. MCU can then cancel the input offset by measuring Vsen voltage with H-bridge disabled. The resulting A-V ratio (with Rsen = 5 mΩ) is:

$$V_{sen} = 0.2 \times I_{out} + 0.2 \text{ V (can be calibrated on fly)}$$

Operating States

NCV7535 provides two static operating modes selectable via SPI registers and EN pin.

After power-up, the device enters low-power Standby mode with the H-bridge disabled.

To enter the Active mode, EN pin has to be pulled high and CONTROL_0.MODE bit set. Typically, EN pin can be controlled the MCU reset signal to ensure the motor is running under MCU supervision only.

Additional details of the NCV7535 operation and parameters can be found in the corresponding datasheet [1].

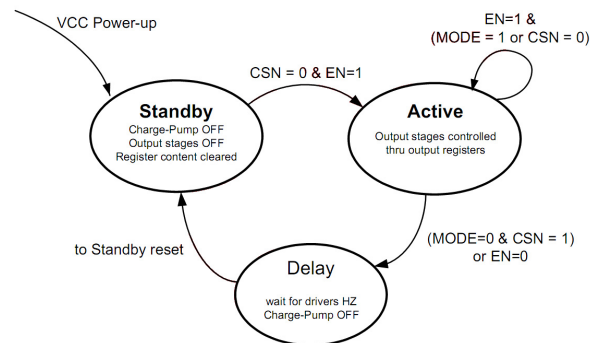


Figure 5. NCV7535 State Diagram

GETTING STARTED

The board supports three ways of NCV7535 device control:

1. PC control – the user have full control over NCV7535 settings using PC connected to the board via USB.
2. Standalone mode – PWM duty-cycle (motor speed) can be changed via on-board potentiometers. No other device setting is available.
3. External MCU control – external MCU controls the all the NCV7535 settings directly via SPI and PWM pins.

PC Control Mode

1. Move slide switches “SW_xx” to the left position (see Figure 3.)
2. Move slide switch “SW_SA” to the left position
3. Connect the load to “OUT1/2” bush connectors
4. Connect the main supply to “Vbat” and “GND” bush connectors
5. Connect the board by Mini-USB connector to the PC, wait for drivers installation, if needed
6. Run the “Motor GUI” software

7. In the startup window select “NCV7535” controller
8. The software should connect to the board. If the connection was successful, the controller window opens.
9. To control the load, use “Hardware Controls” and “Demo” (See Figures 6 and 8). Here is an example of the settings:
 - a. Check “PWM On/Off” in “Hardware Controls”,
 - b. Set “Speed Control” to > 0% in “Demo”,
 - c. Check “Forward” or “Reverse” in “Demo”

Standalone Mode

1. Move slide switches “SW_xx” to the left position (see Figure 3.)
2. Move slide switch “SW_SA” to the right position
3. Connect the load to “OUT1/2” bush connectors
4. Connect the main supply to “Vbat” and “GND” bush connectors
5. “LED_SA” indicates the Standalone mode
6. The motor speed (PWM duty-cycle) can be changed by “Pot1”

When changing the mode, the supply of the board needs to be disconnected of MCU reset by “SW_RST” button.

NCV7535EVB

NCV7535

File Help About

ChipInfo

Request ChipInfo

	ID	Version	Product Code 1	Product Code 2	SPI-Frame ID
Address	00h	01h	02h	03h	3Eh
Value	0x4300	0x0	0x7500	0x3500	0x200

Target Board Connected: NCV7535

Status Register

Global Status Register

FLT	TF	RESB	TSD	Reserved	UOV_OC	Reserved	NRDY
1	0	0	0	0	0	0	1

Hardware Controls

PWM ON/OFF ☐ PWM Freq(Hz): 16000

Speed Control

Duty(%): 0

Register Access

Register Map View **Demo**

Motor Control

☐ Forward ☐ Reverse

☒ Toggle State (Sticky Buttons)

☐ Motor Brake (Quick STOP)

☐ HS/LS Freewheeling

☐ Active/Passive Freewheeling

Reset/Clear

Protection

Over-Current Threshold (Volts): 0.25 V

H->L DeadTime: 250 ns

L->H DeadTime: 250 ns

☐ Fast Slew Rate

☐ Half Bridge Config

Preset Actions

Read All Registers **Write All Registers** **Load File** **Save File**

(COM23) Connected....

Figure 6. NCV7535 Controller Window

NCV7535EVB

PCB DRAWINGS

Assembly Drawings

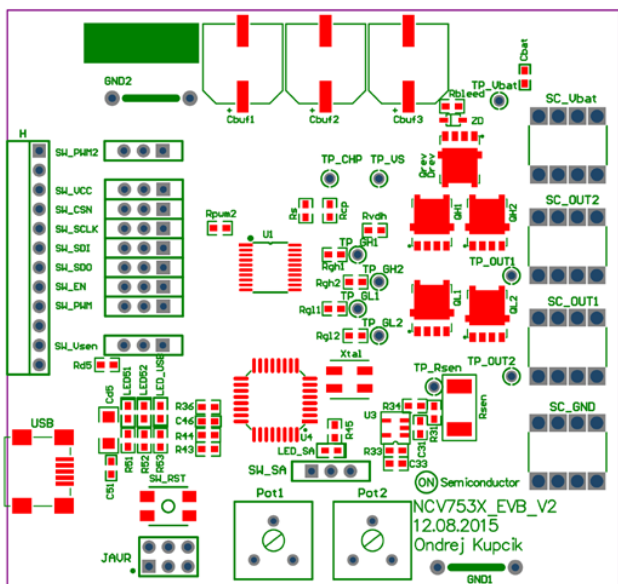


Figure 7. NCV7535 EVB PCB Top Assembly Drawing

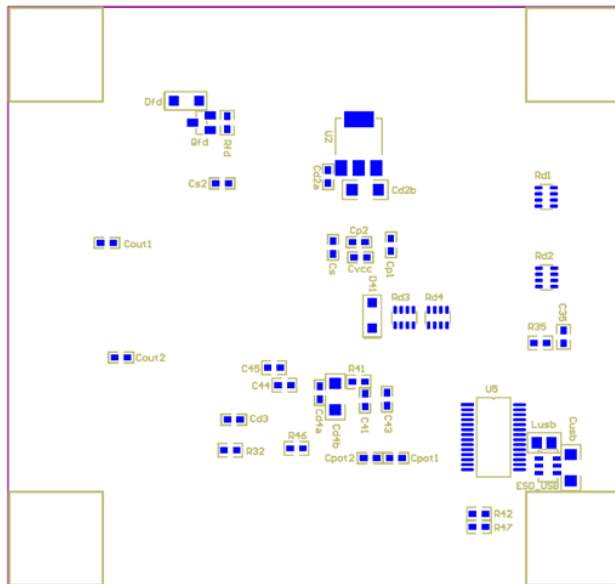


Figure 8. NCV7535 EVB PCB Bottom Assembly Drawing

Composite Drawings

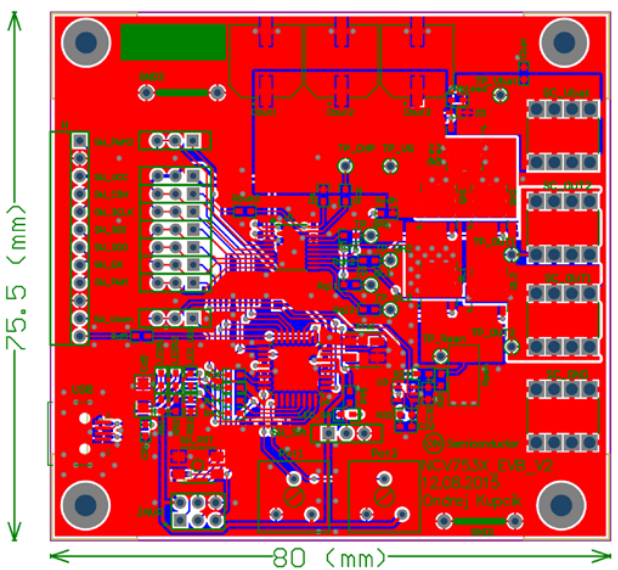


Figure 9. NCV7535 EVB PCB Top Composite Drawing

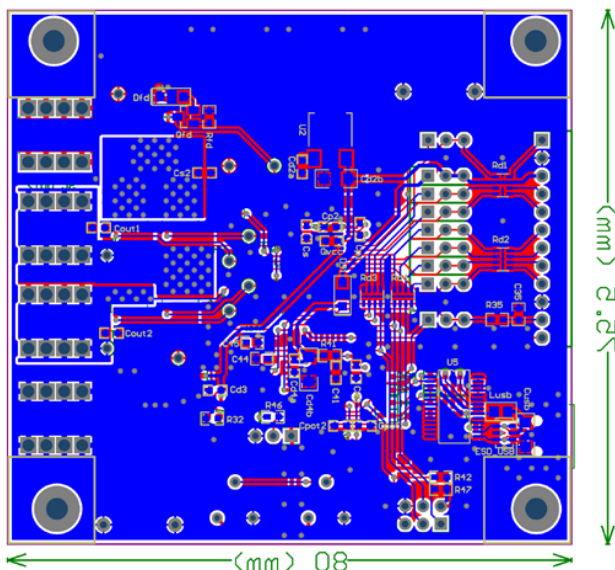



Figure 10. NCV7535 EVB PCB Bottom Composite Drawing

References

- [1] ON Semiconductor, NCV7535 Product Datasheet Rev.P0, November 2016.

ON Semiconductor and  are trademarks of Semiconductor Components Industries, LLC dba ON Semiconductor or its subsidiaries in the United States and/or other countries. ON Semiconductor owns the rights to a number of patents, trademarks, copyrights, trade secrets, and other intellectual property. A listing of ON Semiconductor's product/patent coverage may be accessed at www.onsemi.com/site/pdf/Patent-Marketing.pdf. ON Semiconductor reserves the right to make changes without further notice to any products herein. ON Semiconductor makes no warranty, representation or guarantee regarding the suitability of its products for any particular purpose, nor does ON Semiconductor assume any liability arising out of the application or use of any product or circuit, and specifically disclaims any and all liability, including without limitation special, consequential or incidental damages. Buyer is responsible for its products and applications using ON Semiconductor products, including compliance with all laws, regulations and safety requirements or standards, regardless of any support or applications information provided by ON Semiconductor. "Typical" parameters which may be provided in ON Semiconductor data sheets and/or specifications can and do vary in different applications and actual performance may vary over time. All operating parameters, including "Typicals" must be validated for each customer application by customer's technical experts. ON Semiconductor does not convey any license under its patent rights nor the rights of others. ON Semiconductor products are not designed, intended, or authorized for use as a critical component in life support systems or any FDA Class 3 medical devices or medical devices with a same or similar classification in a foreign jurisdiction or any devices intended for implantation in the human body. Should Buyer purchase or use ON Semiconductor products for any such unintended or unauthorized application, Buyer shall indemnify and hold ON Semiconductor and its officers, employees, subsidiaries, affiliates, and distributors harmless against all claims, costs, damages, and expenses, and reasonable attorney fees arising out of, directly or indirectly, any claim of personal injury or death associated with such unintended or unauthorized use, even if such claim alleges that ON Semiconductor was negligent regarding the design or manufacture of the part. ON Semiconductor is an Equal Opportunity/Affirmative Action Employer. This literature is subject to all applicable copyright laws and is not for resale in any manner.

PUBLICATION ORDERING INFORMATION

LITERATURE FULFILLMENT:

Literature Distribution Center for ON Semiconductor
19521 E. 32nd Pkwy, Aurora, Colorado 80011 USA
Phone: 303-675-2175 or 800-344-3860 Toll Free USA/Canada
Fax: 303-675-2176 or 800-344-3867 Toll Free USA/Canada
Email: orderlit@onsemi.com

N. American Technical Support: 800-282-9855 Toll Free
USA/Canada

Europe, Middle East and Africa Technical Support:
Phone: 421 33 790 2910

Japan Customer Focus Center
Phone: 81-3-5817-1050

ON Semiconductor Website: www.onsemi.com

Order Literature: <http://www.onsemi.com/orderlit>

For additional information, please contact your local
Sales Representative