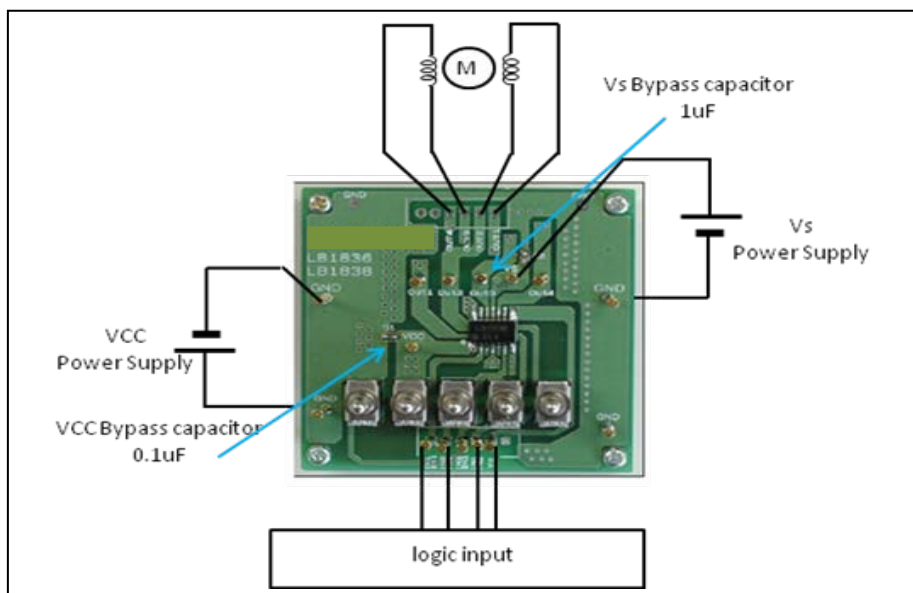
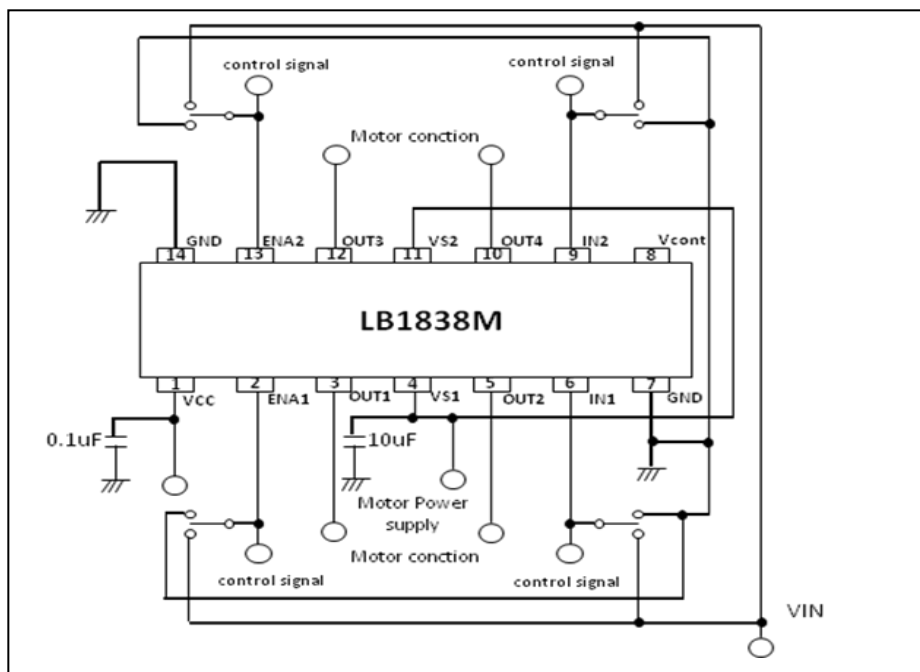


Test Procedure for the LB1838MGEVB Evaluation Board

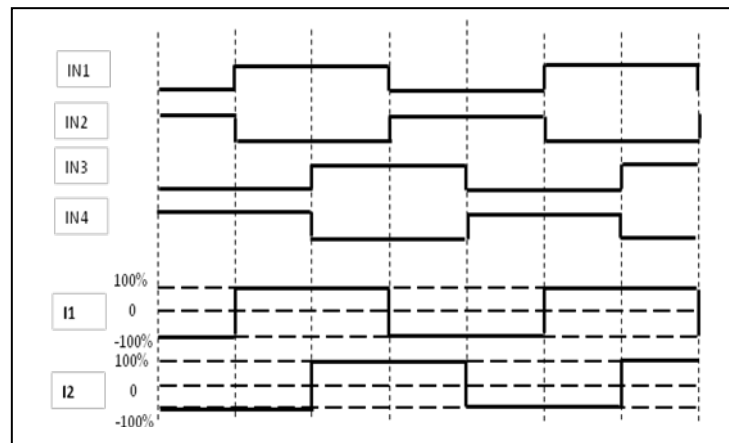


(Circuit diagram of the evaluation board)



Testing Procedure:

1. Connect a stepper motor with OUT1, OUT2, OUT3 and OUT4.
2. Connect the motor power supply with the terminal VCC and VS. Connect the GND line with the terminal GND.
3. Stepper motor drives it in 2 phase excitation by inputting a signal such as follows into ENA1, IN1, ENA2 and IN2.
4. Check the stepper motor is rotating.
5. Check the waveform of the output voltage and current. (Please refer to the following waveform example.)



2 phase excitation timing chart

- Stepper motor driving waveform example

